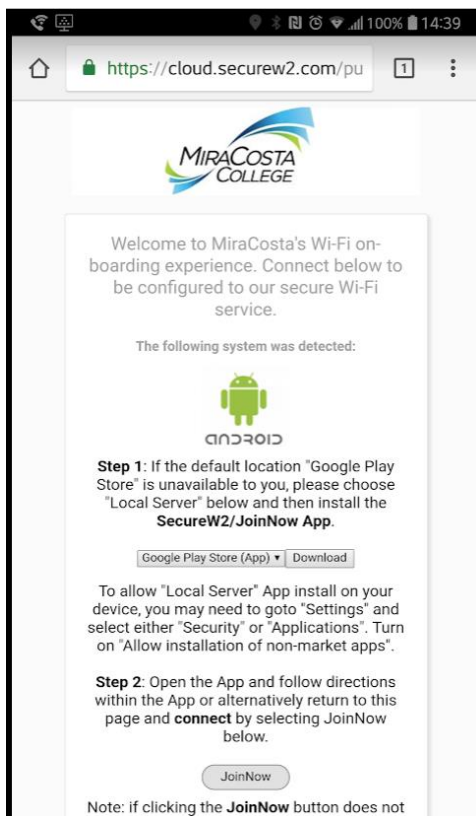


# MiraCosta College Secure Wi-Fi device On-boarding

Starting the process of on-boarding your device to MiraCosta's secure network requires a couple pre-requisites. Please make sure you have the following before starting.

- A valid account (students will use their SURF login, employees will use their Outlook account.)
- The Passcode or Pin number for your device, Google requires you to have a lock screen.
- Your device will need to be connected to your carrier's data network OR connected to MiraCosta's open non-secure MiraCosta-WIFI network.

Launch a browser on your device, and go to <https://cloud.securew2.com/public/70901/mcc-secure-wifi/>

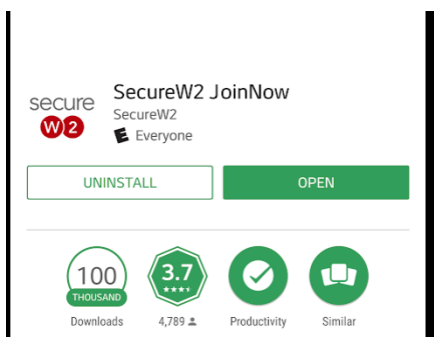


- You should see this page.
- The system should recognize that you are an Android user.

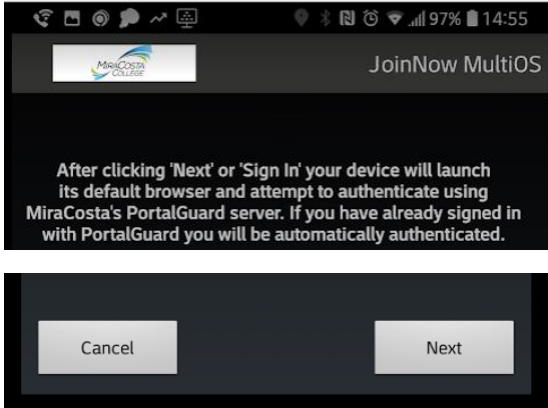
If you are on a device that has access to the Google Play Store and you have an account click the download button and begin the process of installing the 'JoinNow' APP.

If you do not have access to the Play Store then choose 'Local Server' and click 'Download'.

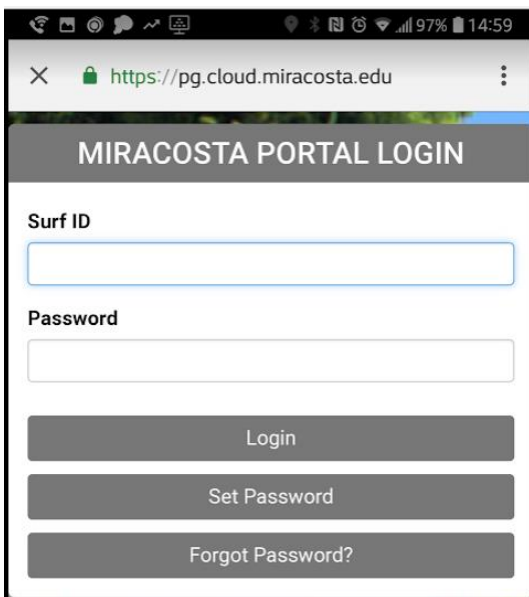
Once you have installed the JoinNow APP click 'OPEN'



The system will recognize that you are from MiraCosta, you will see our logo while the configuration is downloaded and then your device will end up at this screen where when you click 'next' the APP will provision your device.

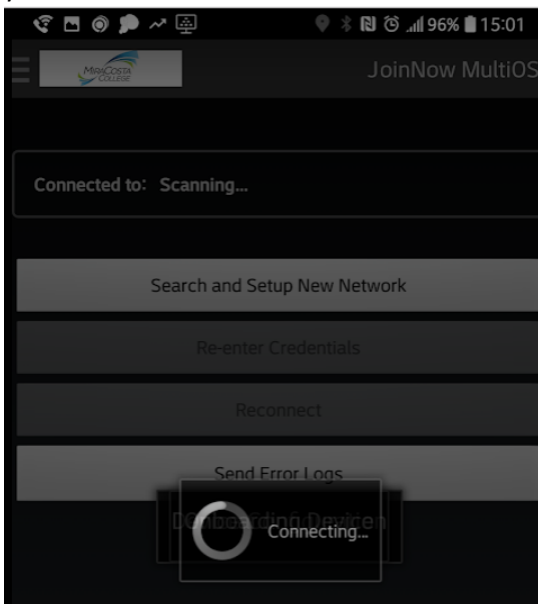


You will be redirected to our SingleSignOn Service, PortalGuard



- Students: Use your SURF ID and password.
- Staff: Use your regular MiraCosta account.

After you enter your credentials and click 'Login' the system will authenticate you and the APP will start provisioning your device. You will see several screens while the provisioning is in process.



Eventually you will end up at the following screen, after you click done your device will be provisioned and active on our secure network.

