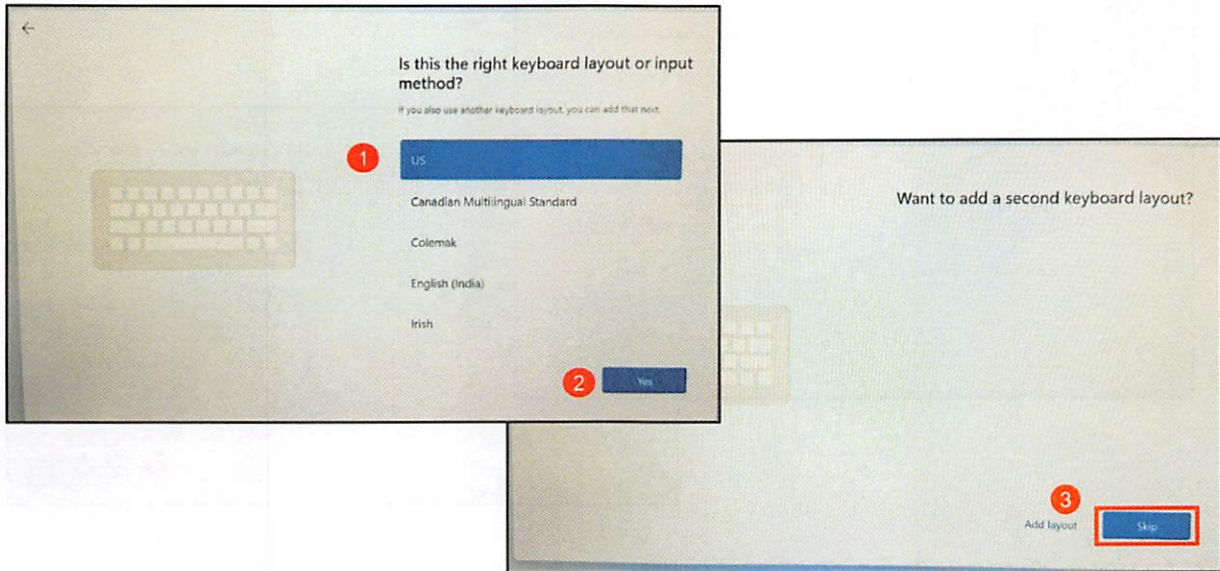


Please follow the instructions below for setting up your MiraCosta Library Loaner Laptop

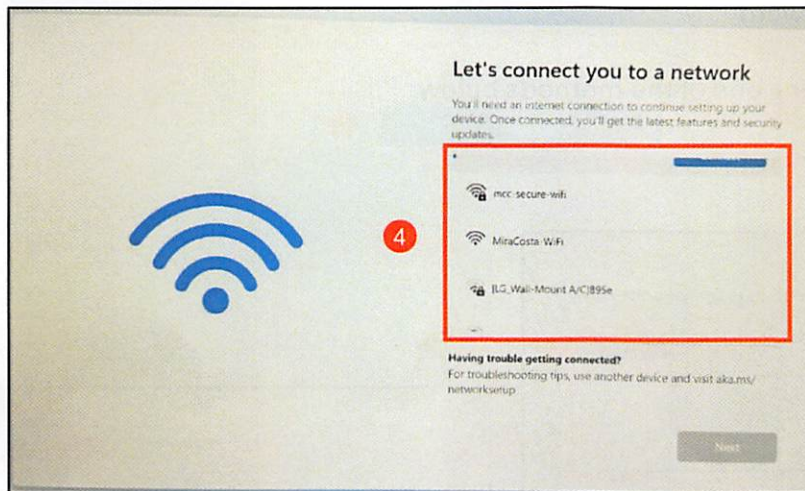
Setup Keyboard

1. Choose your keyboard language.
2. Select **Yes** to continue.
3. Click **Skip** to bypass adding a second layout.



Connect Wi-Fi

4. Select the appropriate WiFi network from the available list



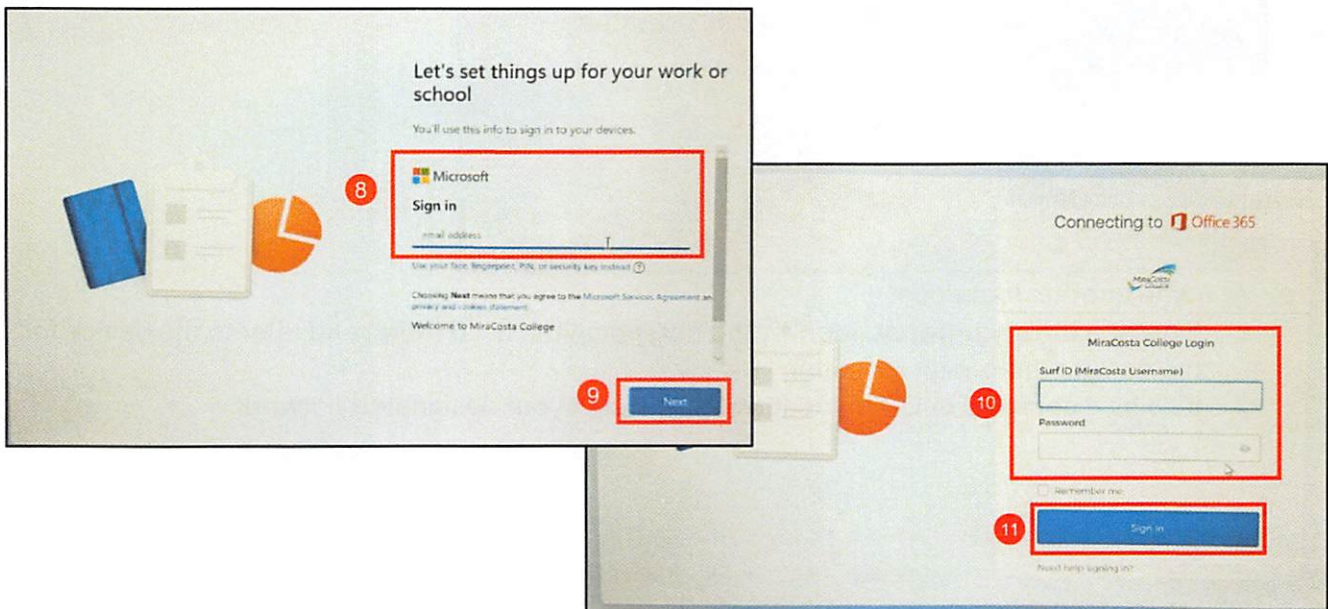
- a. At home or other locations:
 - i. If using a **library hotspot**, identify the hotspot in the list (**H-###**) and refer to the device for the correct three-digit identifier
 - ii. If using a personal or Other location WiFi, select your designated network

- b. On campus:
 - i. Choose MiraCosta-WiFi from the network options
 - ii. Ensure the **Connect Automatically** option is selected
5. After selecting your preferred WiFi network
6. Click **Connect**
7. Once a connection is established, click **Next**



Sign in to your Microsoft School account

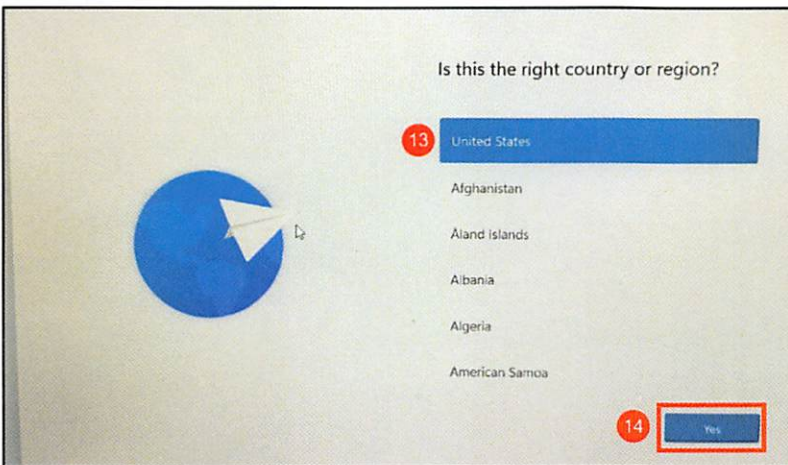
8. Enter your MiraCosta student email address (e.g., **W1234567@student.miracosta.edu**) in the Microsoft Sign in Box
 - a. This can be found within the instructions on the lid of your laptop
9. Click **Next**
10. Enter your SURF ID and Password
11. Click **Sign In**
12. Complete authentication using one of the methods below:
 - a. Okta Verify
 - b. SMS (Text Message)
 - c. Email



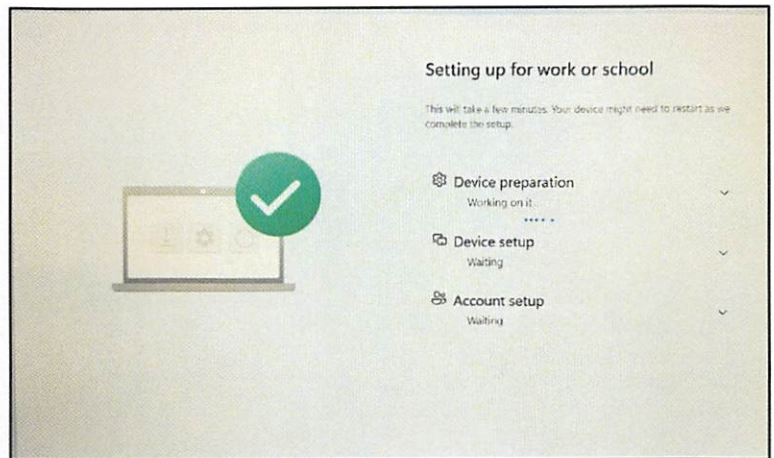
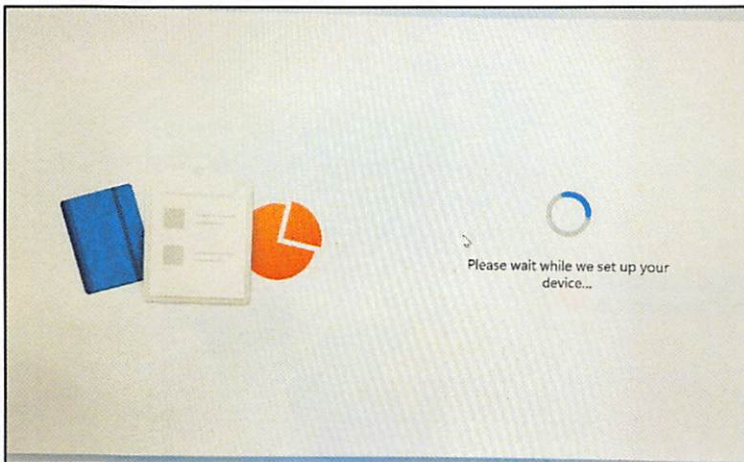
Entering the Country or Region

13. Select **United States**

14. Click **Yes**



15. After Clicking Yes, allow 30 minutes to 1 hour for the setup process to complete



Application Setup

16. Once Windows starts, all applications will proceed with installation and loading.

a. The installation process may take some time.

i. **Office 365, Chrome, Firefox, VMWare, etc.**

